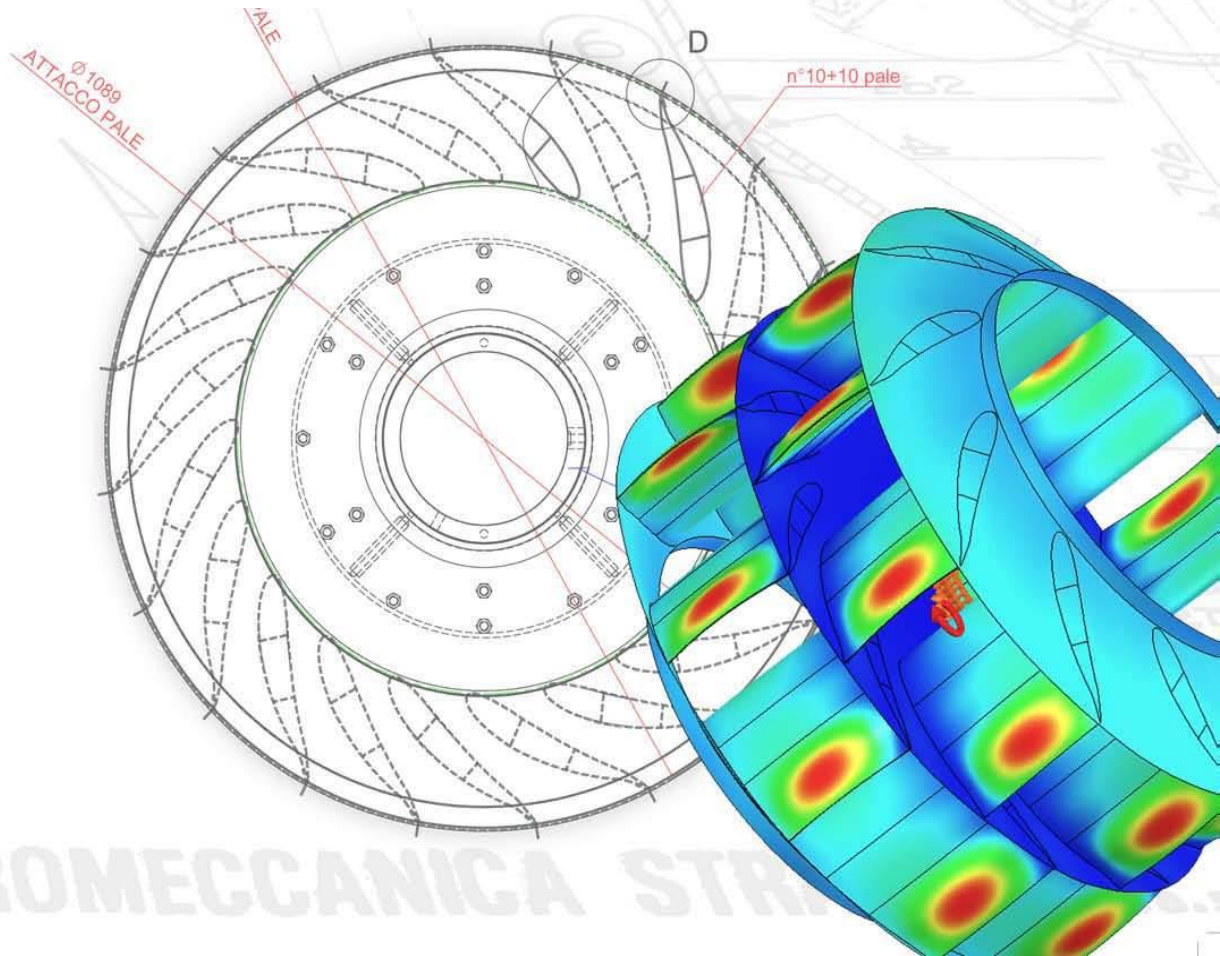




Since 1928 we care about environment!



DUSCON
the Gas Cleaning Division of AEROMECCANICA STRANICH



Steel Industry

Petrochemical

Chemical



Since 1928 we care about environment!

AEROMECCANICA
STRANICH

COMPANY PRESENTATION

VISIT OUR WEBSITE:
WWW.STRANICH.IT

SEE OUR NEW VIDEO COMPANY PRESENTATION:

<http://www.youtube.com/watch?v=nrZZVn4KHnE>

Al

COMPANY PROFILE

COMPANY

FULL LEGAL NAME

AEROMECCANICA STRANICH S.P.A.

ESTABLISHMENT YEAR

1928

FACILITIES

**SESTO S. GIOVANNI (MI) : FACTORY 4500 MQ
OFFICE 1000 MQ
FREE AREA 3500 MQ**

**PIOLTELLO (MI) : FACTORY 3000 MQ
FREE AREA 4000 MQ**

AEROMECCANICA STRANICH STARTED ITS OWN ACTIVITY ON 1928 WITH THE ENGINEERING, MANUFACTURING AND INSTALLATION OF CENTRIFUGAL AND AXIAL FANS FOR ALL THE INDUSTRIAL APPLICATIONS, ACQUIRING AND KEEPING OVER THE YEARS A LEADING POSITION IN THE FIELD.

SINCE 1970 THE COMPANY DEVELOPED THE INTEREST IN THE FIELD OF SYSTEMS FOR POLLUTANT AND DUSTY GASES CONTROL; ON THIS PURPOSE A STRUCTURE HAS BEEN SPECIFICALLY CREATED FOR THE ENGINEERING, MANUFACTURING AND INSTALLATION OF EQUIPMENTS SUCH AS WET AND DRY FILTERS, CYCLONES, SCRUBBERS AND DRYERS ALWAYS TRYING TO PROPOSE TECHNOLOGICALLY ADVANCED SOLUTIONS, REALIZED ON THE BASE OF OWN LICENSES, OR AS A RESULT OF THE COOPERATION WITH THE LEADING COMPANIES IN THE FIELD, BASED IN EUROPE AND ALL OVER THE WORLD, ACHIEVING A ROLE OF EXCELLENCE ALSO IN THE POLLUTION CONTROL FIELD.

COMPANY PROFILE

PRODUCTS

Steel Industry

Petrochemical

AEROMECCANICA
STRANICH

Since 1927 we care about environment!

Engineering and manufacturing of:

- Heavy-Duty centrifugal fans
- Heavy-Duty centrifugal (single / multi stage) blowers
- Axial fans
- Dampers (regulating dampers, tight shut-off guillotines)
- Dedusting and dust recovery systems
- Industrial ventilation and conditioning systems
- Gas and fumes suction and collection systems
- Pneumatic conveying systems
- Scrubbers
- Filters
- Cyclones
- Rotary and two-doors valves

Agent for Italy of:

- DELTA NEU fan and filters from 01.01.2002

Patent:

- Bag filter type "AFT": n° 198422
- TurboFan Impeller: n° 16199249,0 [EU] 102015000083702 [IT]

COMPANY PROFILE

PROCESS AND MACHINERIES

Steel Industry

we care about environment!

Process	Machineries	nr.
Engineering	CAD stations (Autocad , SolidWorks , Cosmos , Nastran)	10
	Personal Computers	45
Cutting	Plasma-arc cutting machine (with CAD/CAM program)	2
	Squaring shears (max thickness 20 mm)	2
	Hacksaws	2
Bending	Calenders (max thickness 25 mm)	3
	Bending press	1
	Beading rolls machine	1
Mechanical working	Horizontal lathe	2
	Vertical turret lathe (\varnothing max 2000 mm)	3
	Broaching machines	2
	Milling machine	1
	Drill press	2
	Punching machine	1

COMPANY PROFILE

FACTORY'S FACILITIES

Steel Industry

Petrochemical

AEROMECCANICA
STRANICH

Industrial Ventilation
and Dust Control

Chemical

Al

Welding (*)	Rod welders	12
	Electrode welders / TIG welders	5 / 1
	Electrode and rod welders	10
Testing	Balancing machine (Ø max 2000 mm)	1
	Portable balancing equipment	3
	Magnetic Yoke	1
	Optic / laser joint alignment equipment	2
	Instrumental test room (VFD fedded) - available net power : 1700 KW; (Max driver rated power: 5.100 kW) - available voltage : 400 V / 3300 V / 6000 V / 11000 V	2
Lifting	Bridge cranes	6 x 10 ton 3 x 30 ton
	Self propelled cranes	3 x 30 ton
	Fork truck	3 x 8 ton
Weighing	Weighbridge	1 x 50 ton

10/2017

(*) Qualified welding processes and welders according to EN and ASME code

COMPANY PROFILE

Steel Industry

QUALITY SYSTEM

Since 1927 we care about environment!



CERTIFICATE

ICIM (SINCERT) n. 0597/4

STANDARD

UNI EN ISO 9001:2008 (SINCE 1996)

FIELD OF ACTIVITIES

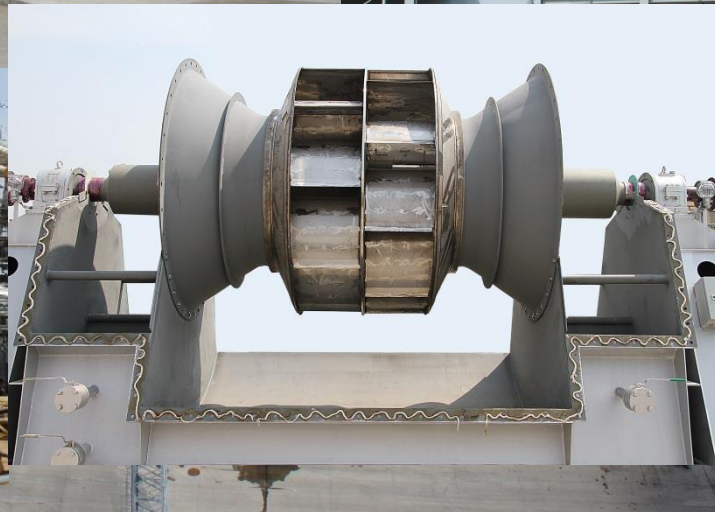
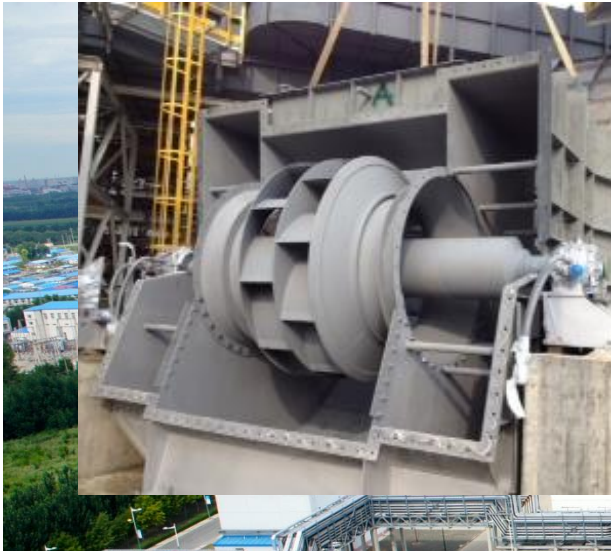
DESIGN, PRODUCTION AND SERVICE OF WET AND DRY AIR POLLUTION CONTROL, CENTRIFUGAL AND AXIAL INDUSTRIAL FANS. DESIGN, PRODUCTION, INSTALLATION AND SERVICE OF DEDUSTING AND PNEUMATIC CONVEYING SYSTEMS.

COMPANY PROFILE

Steel Industry

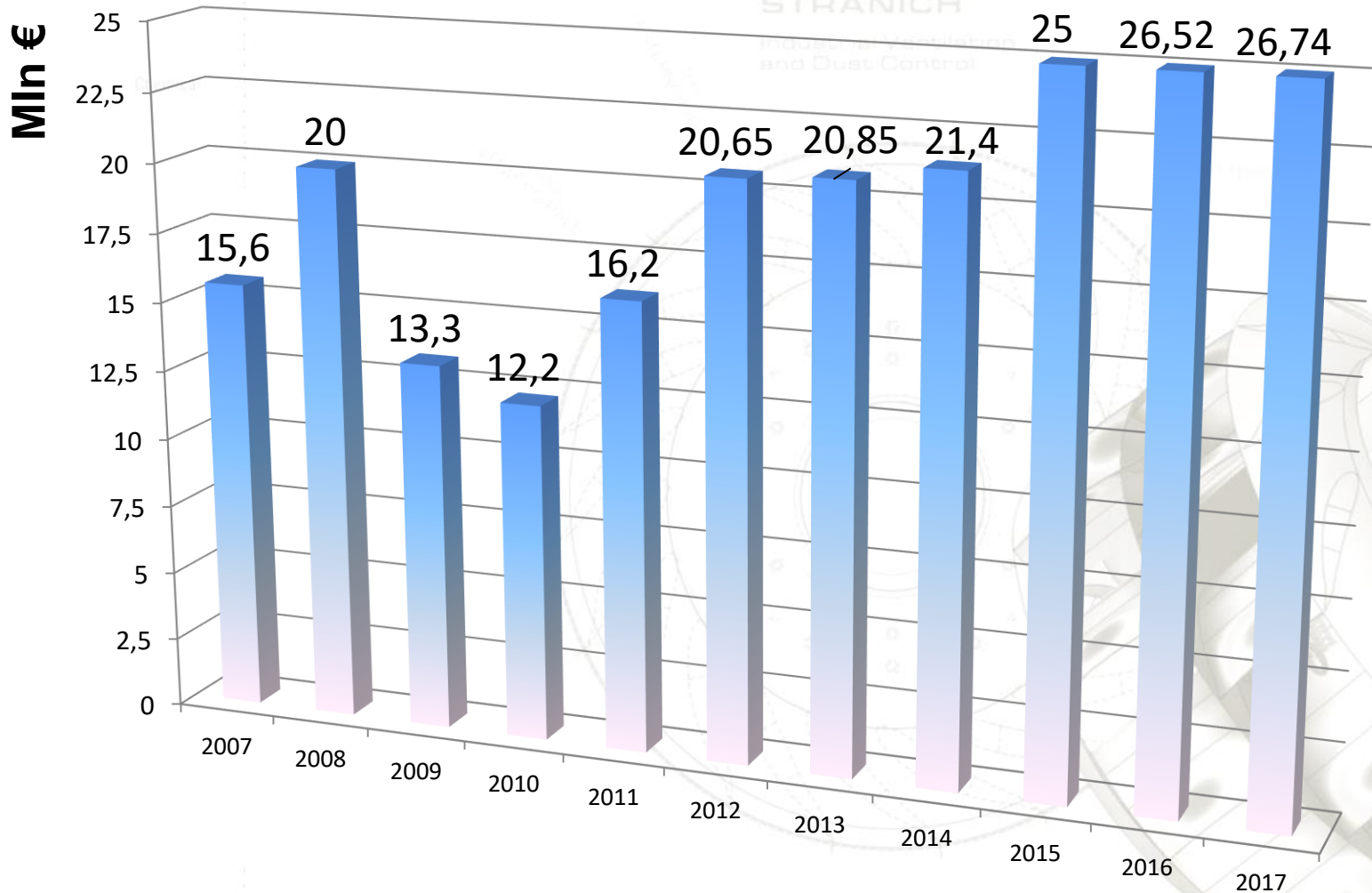
SERVICE

Since 1927 we care about environment!



COMPANY PROFILE

TURNOVER



FIELDS OF APPLICATION

Steel Industry



Steel Industry

Petroch



Petrochemical

Chemical

Phar



Chemical

Cement

Pharma



Power

LOC

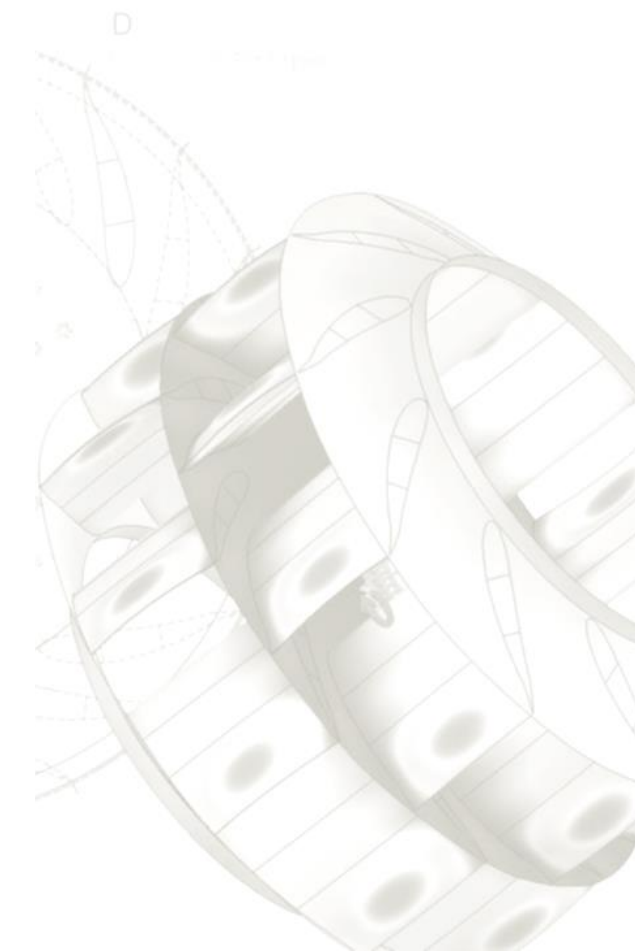


Cement



Pharmaceutical

Since 1928 we care about environment!



AEROMECCANICA STRANICH S.P.A.
Industrial Ventilation and Dust Control

HEADQUARTER AND WORKSHOP

Via S. Maria 11
37060 S. Maria del Monte (Verona) - Italy

WORKSHOP AND TESTROOM

Via S. Maria 11
37060 S. Maria del Monte (Verona) - Italy

Phone

+39 0445 471111

Fax

+39 0445 471111

E-mail

www.aeromeccanica.it

Web

COMPANY PROFILE

MAIN REFERENCES IN ITALY

ACCAM
ACCEDE
AC BOILERS
AVENTIS
BIPAN
BONO
COLACEM
DALLARA
DANIELI
DEMONT
ENI
FATA
FINCANTIERI
FISIA
FLUORSID
FONDMETAL
GBA

GEICO
ILVA
INDENA
INNSE
ITALCEMENTI
ITAS
ITT
KIRCHNER
LUXOTTICA
MACCHI – SOFINTER
MAGALDI
MAIRE TECNIMONT
MARCEGAGLIA
MINO
M&G – CHEMTEX
NOVARTIS
NUOVO PIGNONE

PENSOTTI FCL
RISO TICINO
SADEPAN
SAIPEM
SARAS
SIRTEC NIGI
TECHINT
TECNIMONT KT
TEKSID
TENOVA
TME
VERGA ENG.
VERSALIS
VINAVIL

COMPANY PROFILE

MAIN REFERENCES IN EUROPE

AALBORG ENG.
AIR LIQUIDE
ALSTOM POWER
ARCELOR MITTAL
BABCOCK
BASELL
CASALE GROUP
CNIM
DE JONG
DIEFFENBACHER
DONAU CARBON
FERROPEM

FIVES STEIN
GAZPROM
HEURTEY
PETROCHEM
**JOHN ZINK KEU
LAB**
LAFARGE
LUMMUS (CB&I)
NEM
OAO NKNH
PAUL WURTH
PILKINGTON
PRIME METALS

SAINT GOBAIN
SELAS LINDE
SMS
TECHNIP
TECNICAS REUNIDAS
THYSSENKRUPP
TMK
UHDE
UHDENORA
VEOLIA
YARA

COMPANY PROFILE

MAIN REFERENCES IN THE REST OF THE WORLD



AIR PRODUCTS & CHEMICALS INDUSTRIES
ALCOA NARGAN
BHUSHAN POWER AND STEEL NIOC
BOROUGE NISSHO ENG.
CALLIDUS TECHNOLOGIES NOOTER ERIKSEN
CB&I PANGBORN
CHYODA PETROCHEM DEVELOPMENT
CTCI PETROFAC
DAELIM PIDEC
EIL SABIC
ENOC SAMSUNG ENG.
FLUOR SAUDI ARAMCO
GASCO SHELL
GS ENGINEERING SK E&C
HALDIA PETROCHEMICALS TAKREER
HYUNDAI THERMAX
JGC WOOD AMEC FOSTER
KOCH JOHN ZINK WHEELER
ZEECO

COMPANY PROFILE

STRANICH FACTORIES IN SESTO SAN GIOVANNI AND PIOLTELLO (MILAN AREA)

Steel Industry

best environment

STRANICH

Industrial Ventilation
and Dust Control



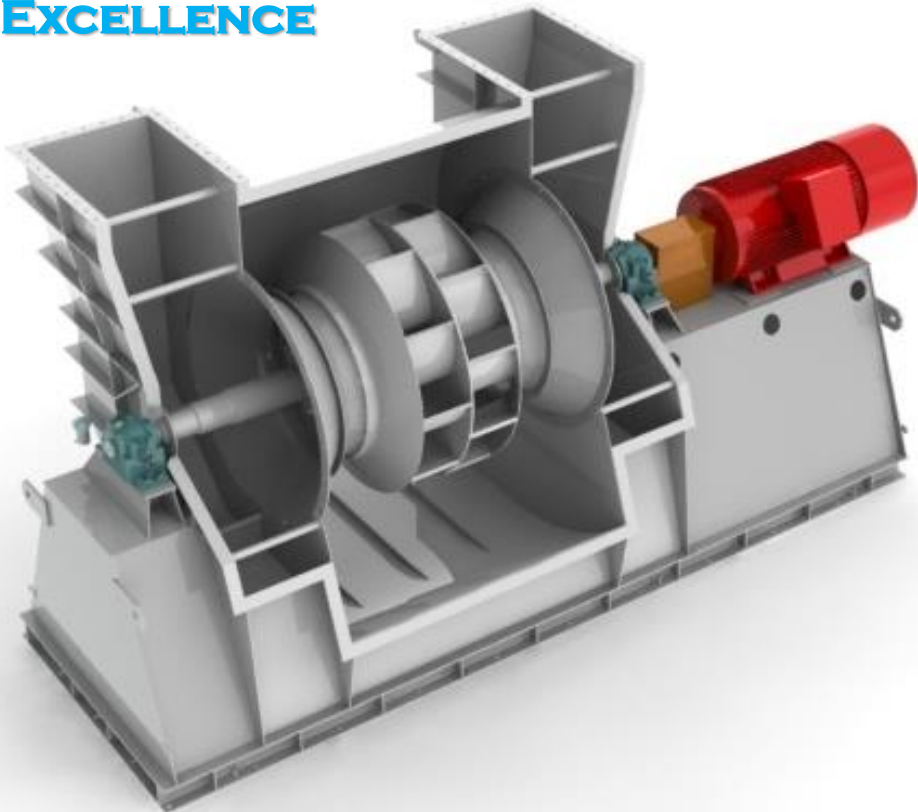
COMPANY PROFILE

Steel Industry

SAMPLE JOBS OVERVIEW

Petrochemical

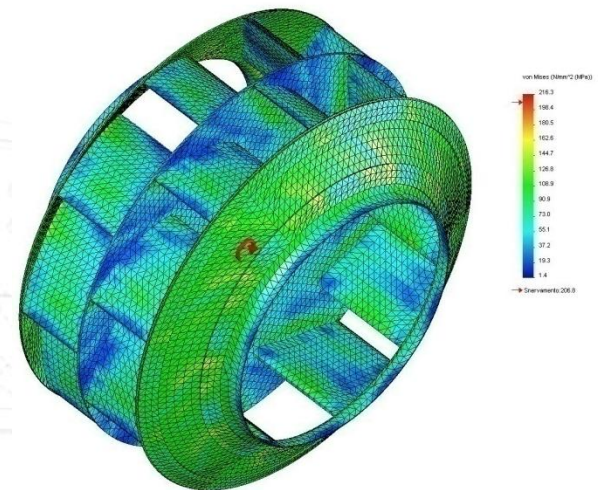
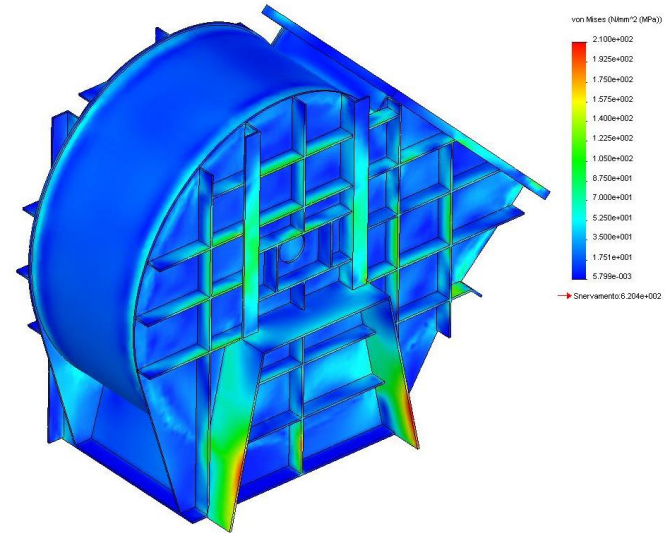
SOLIDWORKS CAD AND COSMOSWORKS FEM SIMULATION FOR ENGINEERING OF EXCELLENCE



AERIAL
STF

Industry
and E

FAV
to



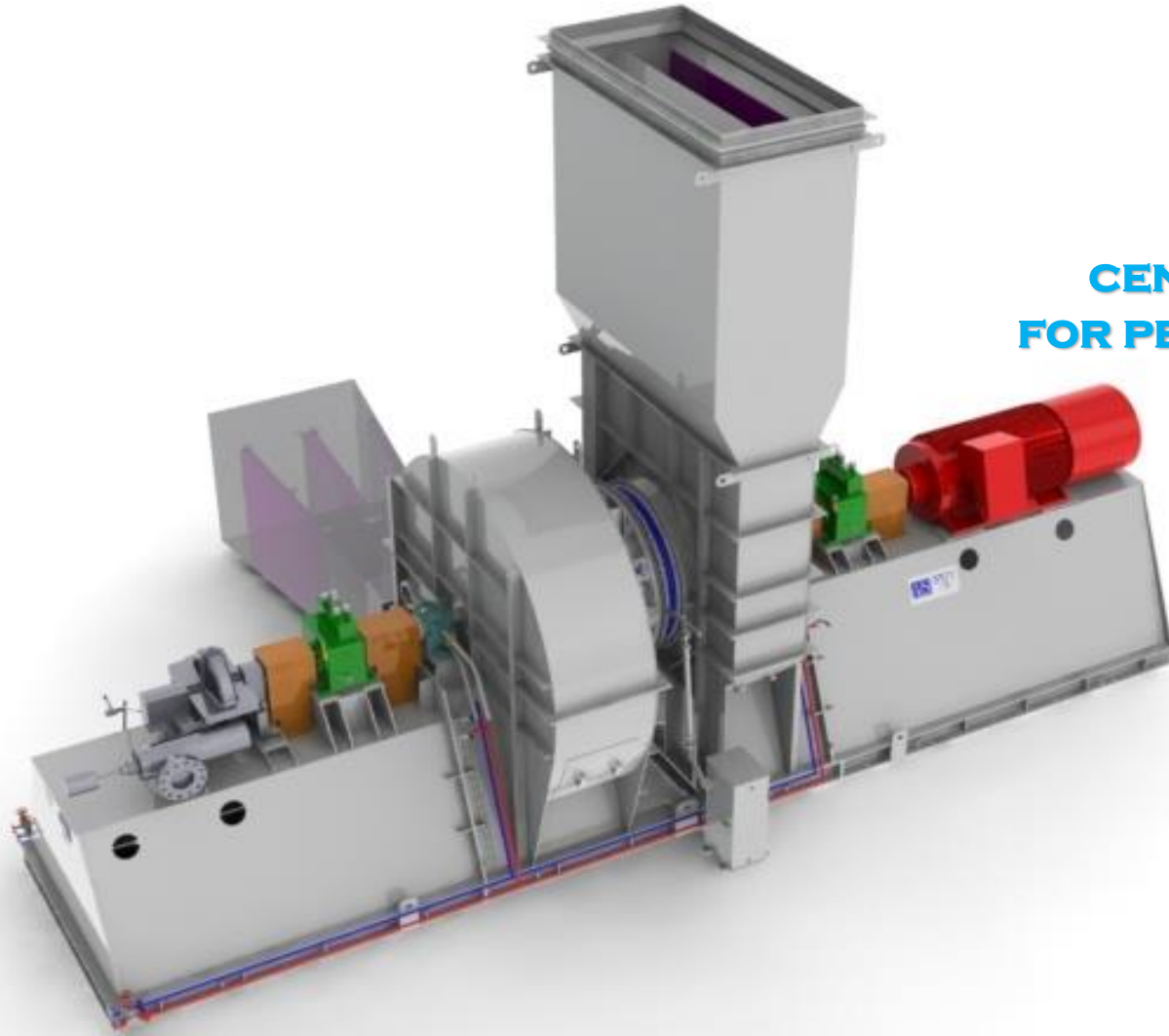
COMPANY PROFILE

Steel Industry

SAMPLE JOBS OVERVIEW

Since 1927 we care about environment!

**TYPICAL
INSTALLATION
DOUBLE DRIVE
CENTRIFUGAL FAN
FOR PETROCHEMICAL
SERVICE**



AEROME
Indust

COMPANY PROFILE

Steel Industry

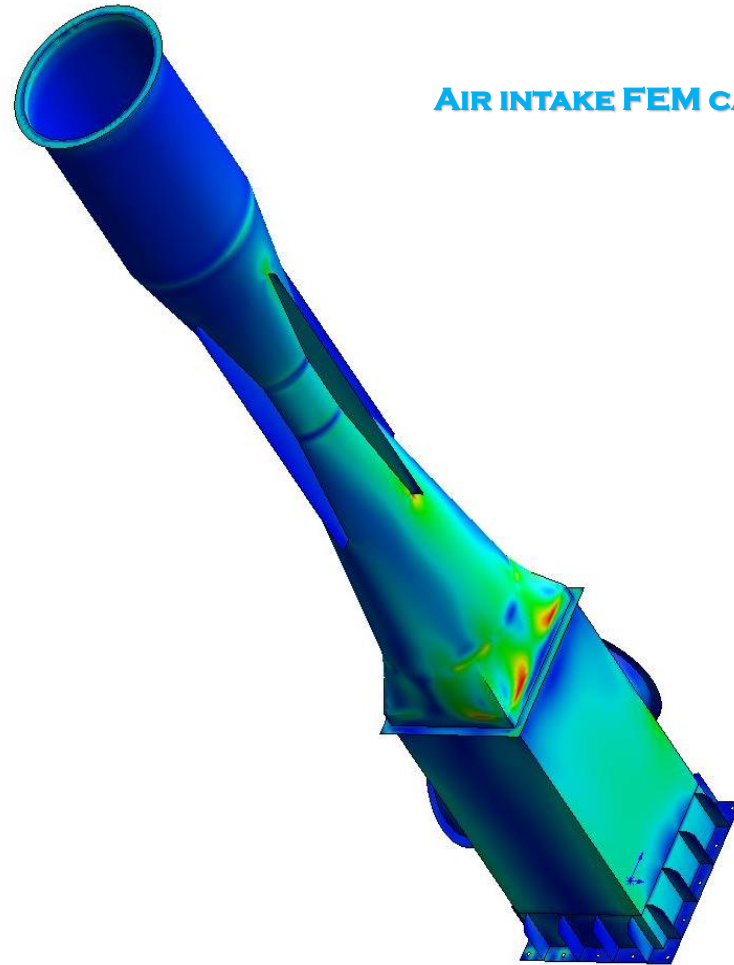
SAMPLE JOBS OVERVIEW

Petrochemical

TYPICAL INSTALLATION OF N° 2 FORCED DRAFT FANS COMPLETE WITH AIR INTAKE AND VENTURI SECTION FOR PETROCHEMICAL SERVICE ACCORDING API STD. 560/673

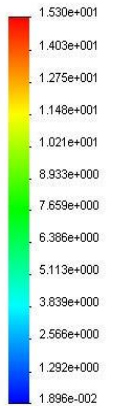
AEROMECCANICA
STRANICH

1927 we care about environment!



AIR INTAKE FEM CALCULATION

von Mises (N/mm² (MPa))



→ Sneramento: 6.204e+002

COMPANY PROFILE

PAST JOBS OVERVIEW: TESTING

Steel Industry

Petrochemical

AEROMECCANICA
STRANICH

Industrial Ventilation
and Dust Control



AEROMECCANICA
Industrial Ventilation

HEADQUARTERS

COMPANY PROFILE

PAST JOBS OVERVIEW: SKIM-TANK GAS BLOWER (3-STAGE)

FAN DATA DESIGN

FAN TYPE: ABD 107-TS

ARRANGEMENT:

SERVICE: COMBUSTION AIR FAN

BLADES TYPE: HOLLOW AIRFOIL

FLUID HANDLED: FRESH AIR

FLOW RATE: 11,000 M³/H

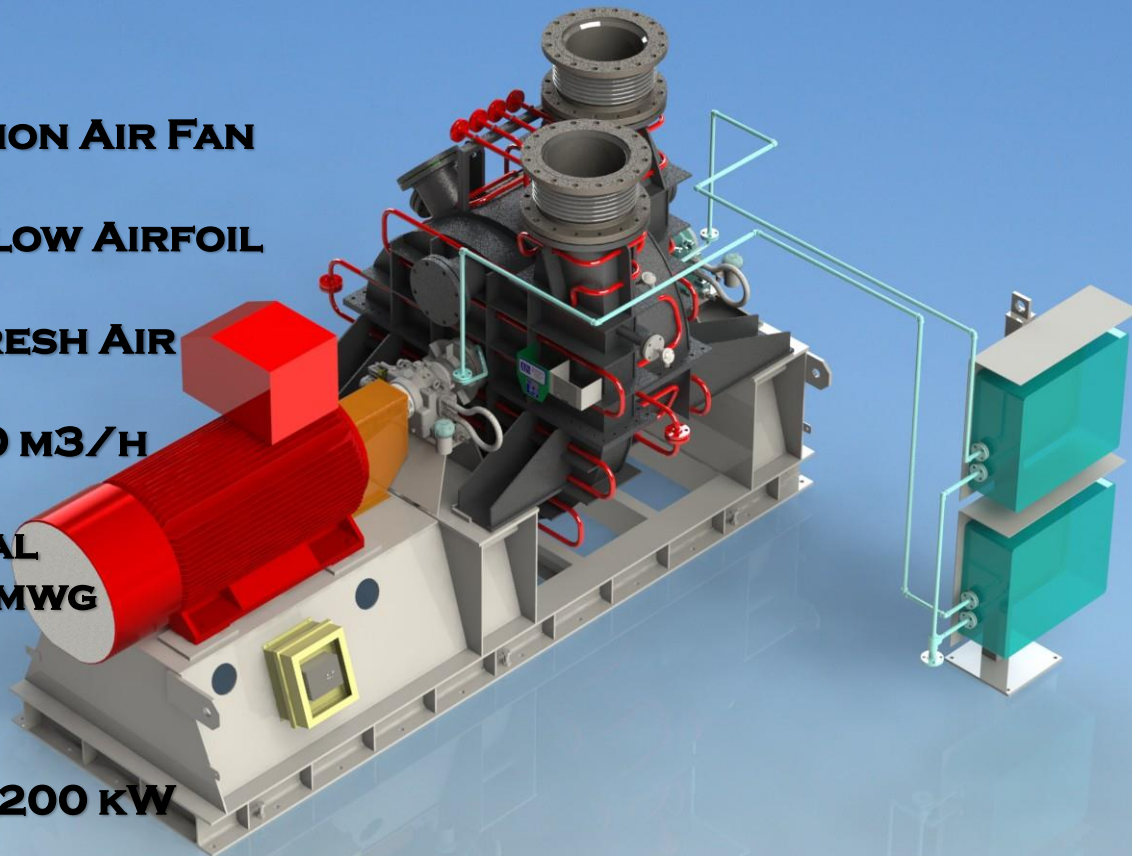
STATIC DIFFERENTIAL

PRESSURE: 4200 MMWG

SPEED: 2980RPM

INSTALLED POWER: 200 KW

SITE: NIS PANCEVO REFINERY



COMPANY PROFILE

CBDC PROJECT – ITEMS 2631-K-003 A/B



FAN DATA DESIGN
FAN TYPE: TSP-90
ARRANGEMENT: 8
SERVICE: BOOSTER
FAN
BLADES TYPE:
RADIAL BLADE
FLOW RATE: 32,400
M³/H
STATIC DIFFERENTIAL
PRESSURE: 475
MMWG
SPEED: 2950 RPM
INSTALLED POWER:
110 kW
SITE: CBDC

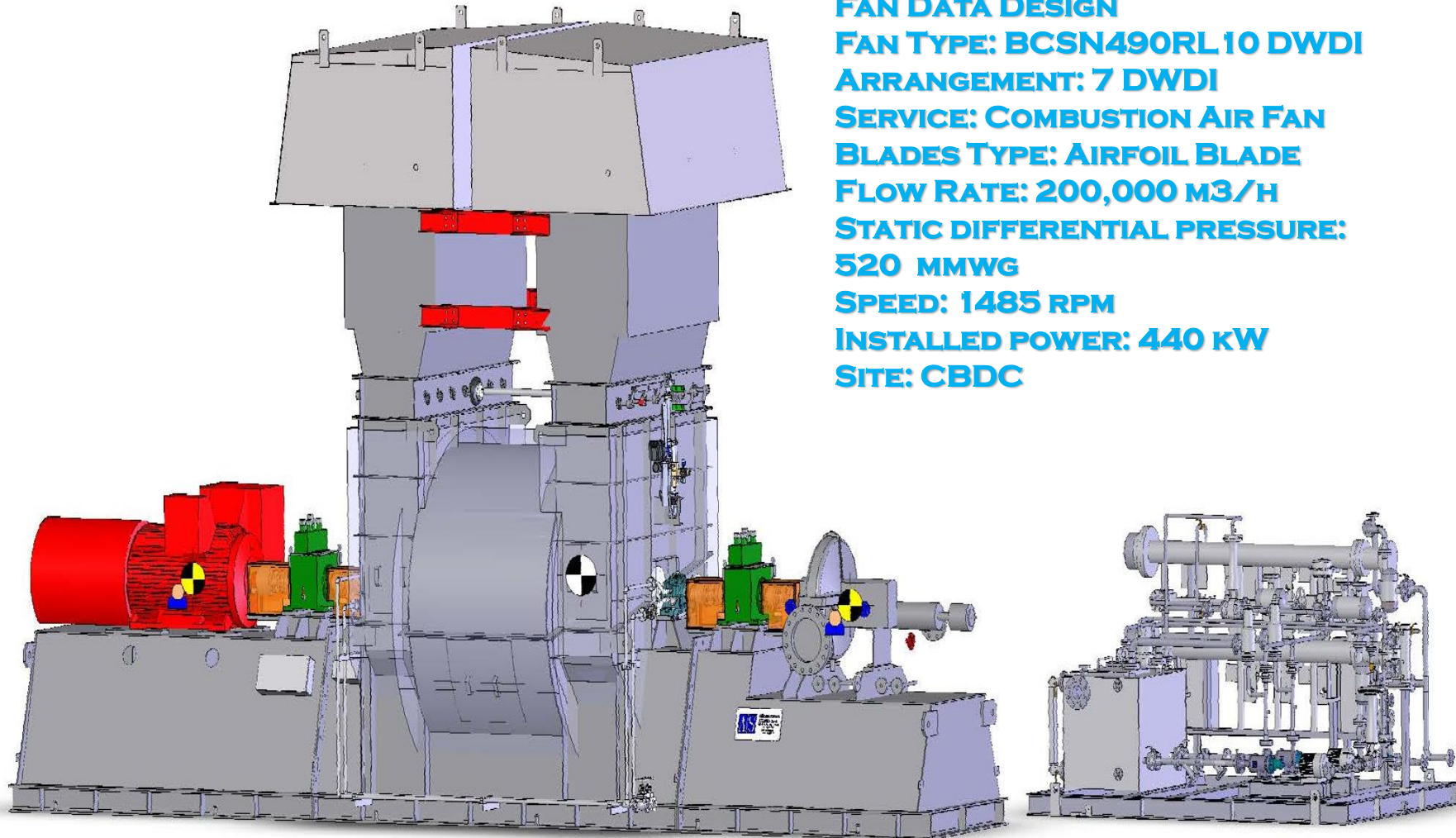
COMPANY PROFILE

CBDC PROJECT – ITEMS 2300-K-003

Steel Industry

Petrochemical

AEROMECCANICA



FAN DATA DESIGN
FAN TYPE: BCSN490RL 10 DWDI
ARRANGEMENT: 7 DWDI
SERVICE: COMBUSTION AIR FAN
BLADES TYPE: AIRFOIL BLADE
FLOW RATE: 200,000 M3/H
STATIC DIFFERENTIAL PRESSURE:
520 MMWG
SPEED: 1485 RPM
INSTALLED POWER: 440 KW
SITE: CBDC

COMPANY PROFILE

PAST JOBS OVERVIEW: EXHAUST - BLOWER FOR RTO (2-STAGE)



FAN DATA DESIGN
FAN TYPE: ABD 84-DS
ARRANGEMENT: 7
SERVICE: EXHAUST
BLOWER FOR RTO
BLADES TYPE:
BACKWARD CURVED
FLOW RATE: 2,000 M³/H
STATIC DIFFERENTIAL
PRESSURE: 4000 MMWG
SPEED: 3560 RPM
INSTALLED POWER: 90
KW
SITE: RABIGH II

Phone
Fax
E-mail
Web

COMPANY PROFILE

PAST JOBS OVERVIEW: DOUBLE DRIVER HEAVY-DUTY FAN

Steel Industry

Petrochemical

Chemical

AEROMECCANICA
STRANICH

Industrial Ventilation
and Dust Control



FAN DATA DESIGN

FAN TYPE: BCSN 542 DWDI

**ARRANGEMENT: 7 DWDI -
DOUBLE DRIVER**

**SERVICE: COMBUSTION AIR
FAN**

**BLADES TYPE: HOLLOW
AIRFOIL**

**FLUID HANDLED: FRESH AIR
FLOW RATE: 300,000 M³/H**

**STATIC DIFFERENTIAL
PRESSURE: 900 MMWG**

SPEED: 1780 RPM

INSTALLED POWER: 1100 KW

**SITE: TASNEE
PETROCHEMICAL COMPLEX,
AL JUBAIL**

Phone
Fax
E-mail
Web

COMPANY'S PROFILE

PAST JOBS OVERVIEW: DWDI HEAVY DUTY FAN



FAN DATA DESIGN
FAN TYPE: BCSN 660 DWDI
ARRANGEMENT: 7 DWDI
SERVICE: COMBUSTION AIR FAN
BLADES TYPE: HOLLOW AIRFOIL
FLUID HANDLED: FRESH AIR
FLOW RATE: 300,000 M³/H
STATIC DIFFERENTIAL PRESSURE:
600 MMWG
SPEED: 985 RPM
INSTALLED POWER: 550 KW
SITE: SHELL PEARL PROJECT
(QATAR)



COMPANY'S PROFILE

PAST JOBS OVERVIEW: MULTISTAGE BLOWERS



FAN DATA DESIGN
FAN TYPE: ABN 10 TS
(THREE STAGES BLOWER)
ARRANGEMENT: 7
SERVICE: COMBUSTION
AIR BLOWER
BLADES TYPE:
BACKWARDLY INCLINED
FLUID HANDLED: FRESH
AIR
FLOW RATE: 13,000
KG/H
STATIC DIFFERENTIAL
PRESSURE: 0.9 BAR G
SPEED: 2990 RPM
INSTALLED POWER: 350
KW
SITE: QAPCO EP2-
QATAR

COMPANY'S PROFILE

PAST JOBS OVERVIEW: HIGH PRESSURE AND TEMPERATURE FANS



FAN DATA DESIGN

FAN TYPE: ABN 6

ARRANGEMENT: 12

SERVICE: HEAT TREATMENT FUEL CELLS

BLADES TYPE: BACKWARDLY INCLINED

FLUID HANDLED: HOT GAS

MECHANICAL DESIGN PRESSURE: 7 BAR G

MECHANICAL DESIGN TEMPERATURE: 700 °C

FLOW RATE: 8,000 M³/H

STATIC DIFFERENTIAL PRESSURE: 0.15 BAR G

SPEED: 2990 RPM

SITE: THYSSENKRUPP STEEL PLANT-TERNI,
ITALY

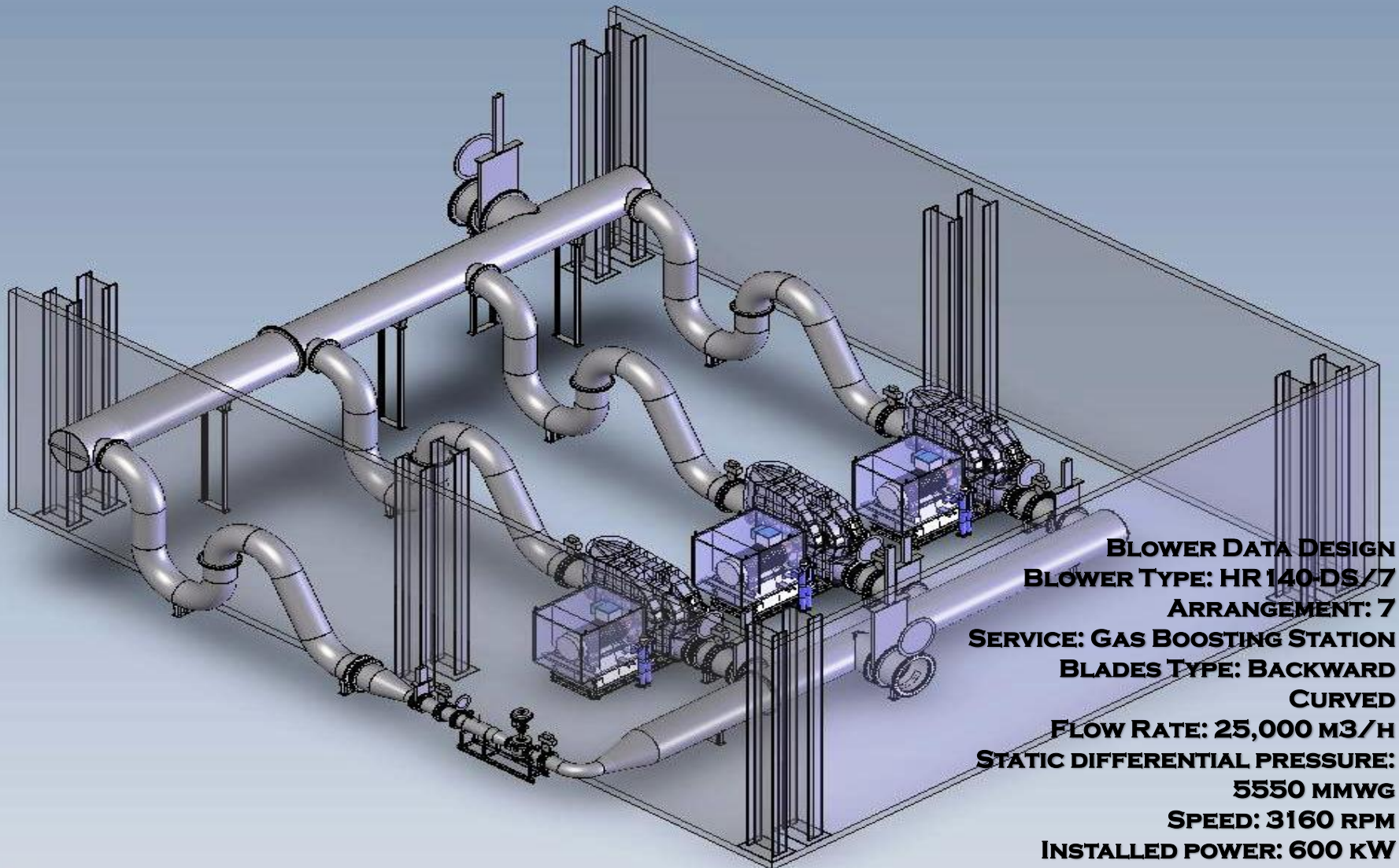


GAS BOOSTING STATION

Steel Industry

(BHUSHAN STEEL)

Since 1927 we care about environment!



BLOWER DATA DESIGN

BLOWER TYPE: HR 140-DS/7

ARRANGEMENT: 7

SERVICE: GAS BOOSTING STATION

BLADES TYPE: BACKWARD

CURVED

FLOW RATE: 25,000 M³/H

STATIC DIFFERENTIAL PRESSURE:

5550 MMWG

SPEED: 3160 RPM

INSTALLED POWER: 600 KW

SITE: BHUSHAN

COMPANY'S PROFILE

PAST JOBS OVERVIEW: WIND TUNNEL'S APPLICATION

Petrochemical



FAN DATA DESIGN

FAN TYPE: VAO 7/410 (AXIAL FLOW, 4100 MM DIA)

ARRANGEMENT: 8

SERVICE: WIND TUNNEL (FORMULA 1 DESIGN CAR)

BLADES TYPE: AIRFOIL

FLUID HANDLED: AIR

FLOW RATE: 1,450,000 M3/H

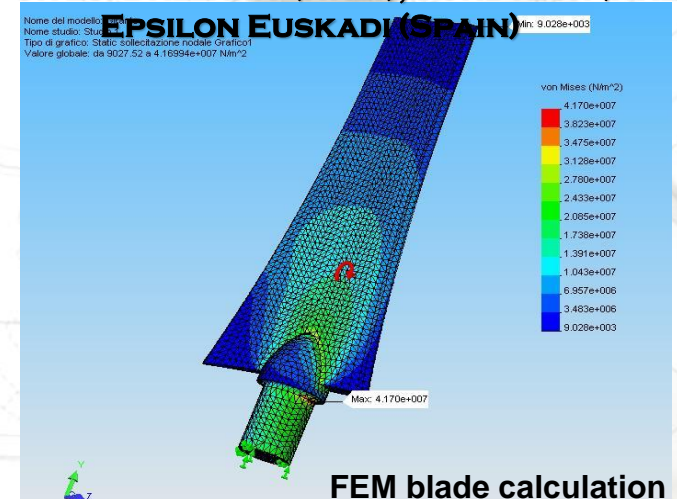
STATIC DIFFERENTIAL PRESSURE: 115 MMWG

SPEED: 510 RPM

INSTALLED POWER: 650 kW

SITES: DALLARA (ITALY); FONDTECH (ITALY)

Nome del modello: **EPSILON EUSKADI (SPAIN)** Min: 9.028e+003
Nome studio: Studio1
Tipo di grafico: Static collection node Grafico1
Valore globale: da 9027.52 a 4.16994e+007 N/m²



FEM blade calculation

...SINCE
1928
WE
CARE
ABOUT
THE
ENVIRONMENT

AS AEROMECCANICA
STRANICH S.p.A.
MILAN - ITALY
TEL. +39 02 2401751 FAX +39 02 2401753
www.stranich.it

JOB 1322413 YEAR 09/14
TYPE TSANTZ ITEM A

m³/h
Pa
RPM

CE

←

AS AEROMECCANICA
STRANICH S.p.A.
MILAN - ITALY
TEL. +39 02 2401751 FAX +39 02 2401753
www.stranich.it

Industrial Ventilation and Dust Control